



KILO AMPERE

**FROM CONCEPT TO
MANUFACTURING,
PROVIDING BEST
TECHNO-SOLUTIONS
FOR THE SWITCHGEAR INDUSTRY**



STRATEGIC ALLIANCE FOSTERING INNOVATION, SOLUTION, AND QUALITY

The Switchgear industry recognizes Sega MechElec for its decade-long experience in manufacturing critical machined components and sub-assemblies. Across the globe, many reputed clients from the electrical industry have collaborated with us for our conceptualization, development & production abilities.

Along with Research & Development, Kilo Ampere brings on board its knowledge of International Utility Requirements, e.g., ENA (UK), SEWA, DEWA, FEWA, MEW (Middle East), AusGRID etc.

This partnership proposes a cost-effective solution derived from the best of both the worlds - 'Manufacturing' and 'R&D'. Our bundled offerings will provide new innovative solutions and amplify your efforts for shorter product development and manufacturing turnaround at a fair market cost.

INTRODUCING THE PARTNERS

Sega MechElec

SEGA has pioneered the art of delivering cost-effective and reliable machine components in the power transmission and distribution industry.

The enterprising culture at SEGA encourages our engineers to show keen interest in early supplier involvement like design consultations. From developing prototypes to the actualization of a product, our skilled craftsmen offer one-stop solutions to produce your challenging and futuristic products. This is the reason why we are constantly investing in acquiring the latest technology and knowledge to better understand your needs.

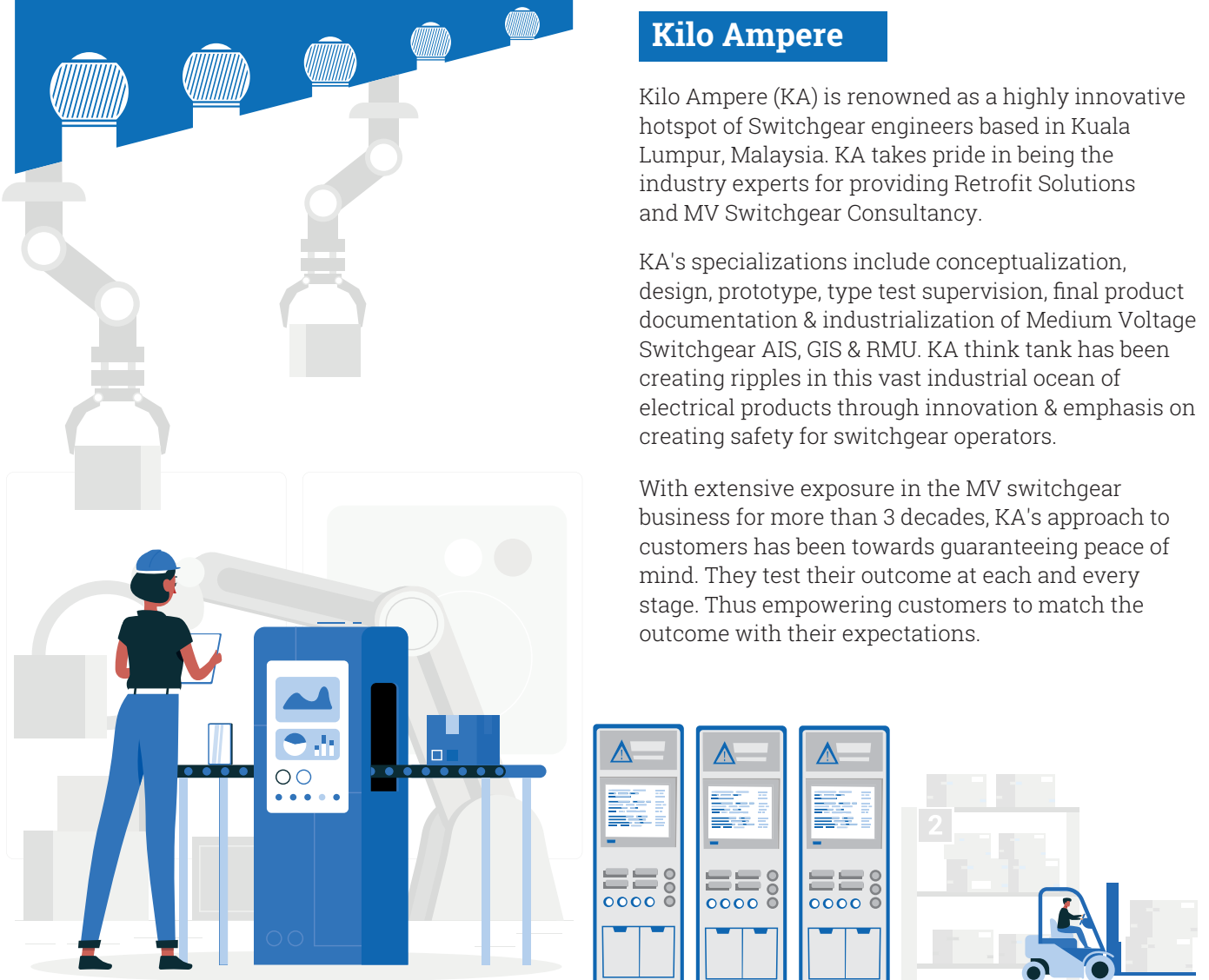
In today's highly competitive markets, we strongly adhere to creating high-quality products. Even the most stringent demands are met by establishing optimal industrial designs, purchasing pure materials, adopting TQM systems in our manufacturing processes and promising trusted

Kilo Ampere

Kilo Ampere (KA) is renowned as a highly innovative hotspot of Switchgear engineers based in Kuala Lumpur, Malaysia. KA takes pride in being the industry experts for providing Retrofit Solutions and MV Switchgear Consultancy.

KA's specializations include conceptualization, design, prototype, type test supervision, final product documentation & industrialization of Medium Voltage Switchgear AIS, GIS & RMU. KA think tank has been creating ripples in this vast industrial ocean of electrical products through innovation & emphasis on creating safety for switchgear operators.

With extensive exposure in the MV switchgear business for more than 3 decades, KA's approach to customers has been towards guaranteeing peace of mind. They test their outcome at each and every stage. Thus empowering customers to match the outcome with their expectations.



OUR ROBUST DELIVERY MODEL

The Zero Model

Together, SEGA and KA are dedicated towards enhancing your existing product designs. In extension, we have devised "The Zero Model" where we offer a full-fledged design consultation for your existing small/medium sized products and sub-assemblies free-of-cost. We will be charging only for the parts/assemblies that get developed and produced during this process.

Use case Scenario for organizations

- Shortened assembly time
- Reduced costs
- Increased product efficiency
- Individual part lifespan
- Shortened production lead time
- Base material availability enhancement

New Product Development

SEGA and KA will utilise their knowledge, expertise, and talent to co-create complex new products for you. Our teams will join hands to understand your needs and conceptualize before taking on the responsibility to partially or fully develop sub-products in congruence with the master product. This will give you and your team more time to focus on other pressing issues, thereby ensuring to build a competitive edge in the market.

Use case Scenario for organizations

- Early product introduction
- Shorter BOM's
- Smaller assembly lines
- Easier scalability
- Smaller teams in supply-chain departments

ABOUT THE FOUNDERS



MANISH
Founder,
Sega MechElec

Manish is an entrepreneur with a vision. At an early stage in his career, Manish started working on building his network during his college days in England. By travelling through the UK and Europe he learnt about different OEM components and extended many of them to his own manufacturing units in India. With an elaborate and diverse tenure of one-and-a-half decades, Manish explored his talent and knowledge to master the Switchgear Industry. After much contemplation, he eventually forayed into manufacturing OEM components. Today, Sega MechElec is a proud supplier of OEM components to power transmission and distribution companies across the globe.

"Our commitment to customers and their organizations reflects with our quality manufacturing processes. Sega MechElec promises to be a reliable companion in your success journey therefore enabling you to win through our products" –Manish



AVANISH
Founder,
Kilo Ampere

In the words of Avnish, "Innovation is the turbo power required for any organization to surge ahead". With 12 patents filed for innovation in various projects in his name, Avnish has also authored more than 15 technical papers for international seminars/journals.

Avnish holds a monumental experience of more than twenty-five years in Medium Voltage R&D in India, France & Malaysia.

He has the rare art of converging innovation into real life saleable products.



BENEFITS TO CUSTOMERS

- Core problems solved in the most optimised way.
- Custom built solutions bringing forward the benefits
- Industry experts solving problems frees up your own resources for more pressing tasks.



**Shortened
Assembly Time**



Reduced Costs



**Increased
Product Efficiency**



**Individual
Part Lifespan**



**Shortened
Production
Lead Time**



**Base Material
Availability
Enhancement**



**Early Product
Introduction**



Shorter BOM's



**Smaller
Assembly Lines**



Easier Scalability



**Smaller Teams
in Supply-Chain
Departments**

Design and Development

- Reduced Load to Focus on Design-in-Hand/
New Developments
- Lesser Time to Remodel/Re-evaluate Older Designs

Procurement and Estimation

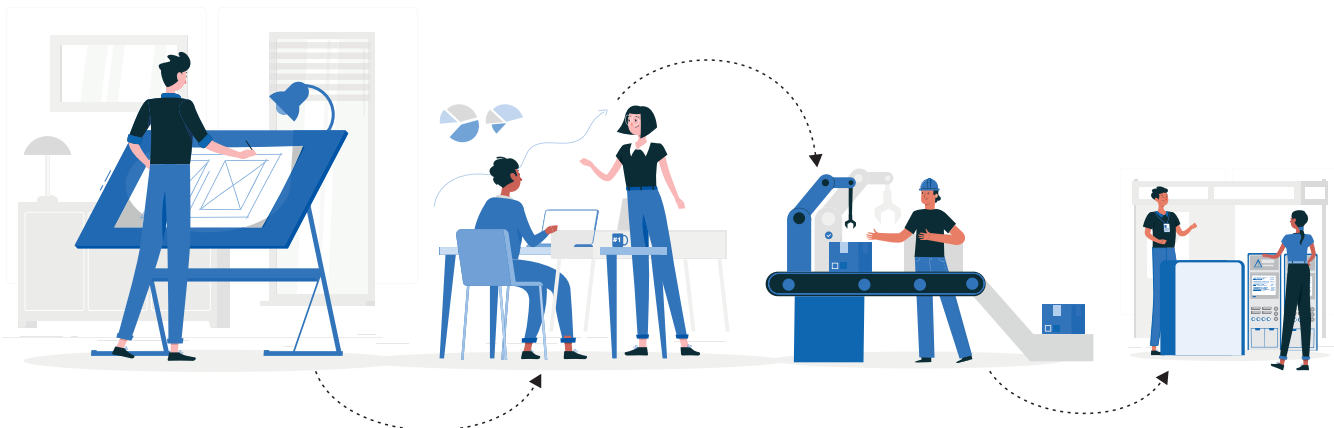
- Smaller Material List
- More Time to Analyse & Achieve Targeted Prices
- Simpler Supply-Chain
- Defined & Definite Lead Times

Production

- Smaller Teams
- Shortened Lead Time
- Cost-effectiveness

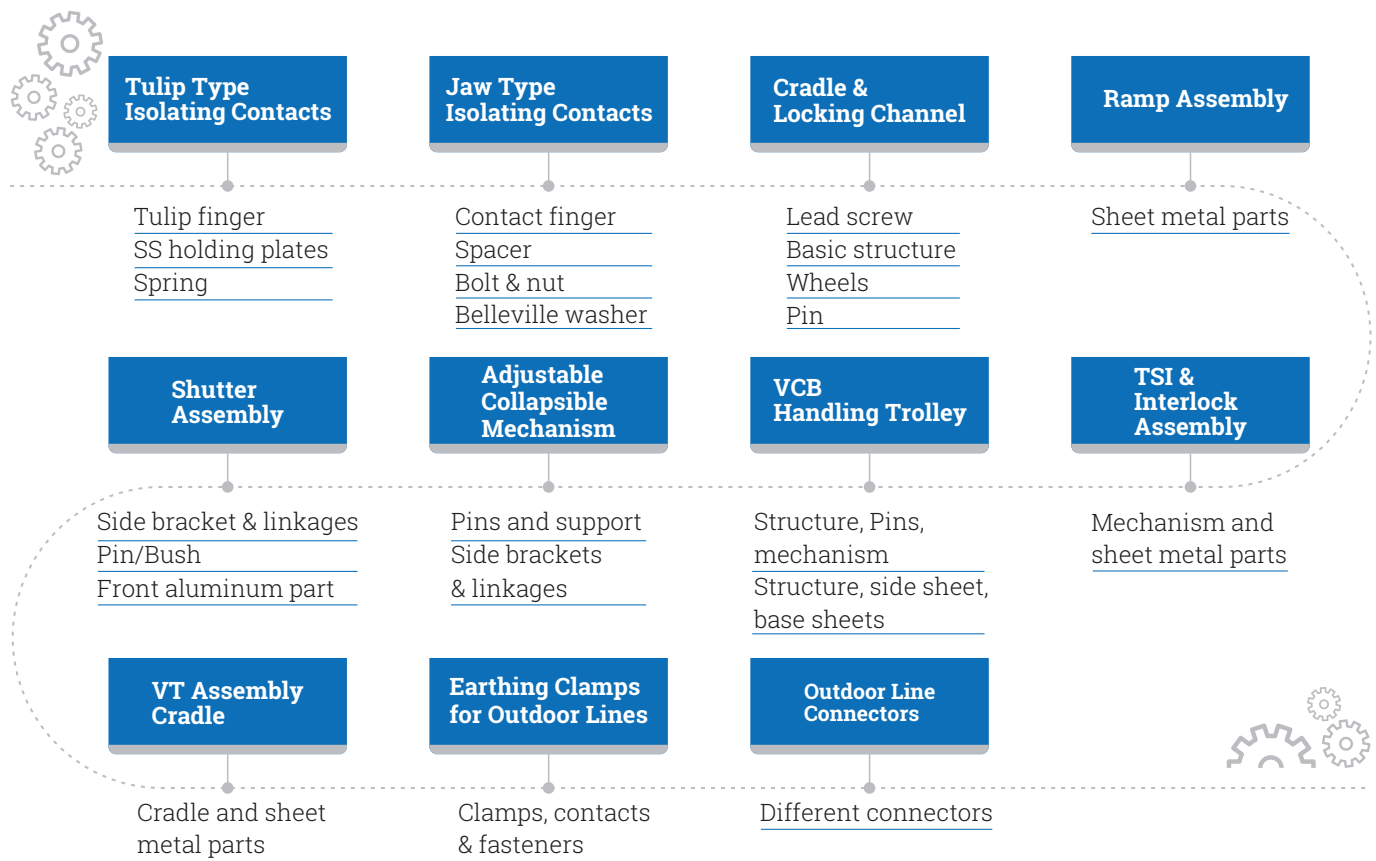
Sales

- On-time Delivery
- Quick Feedback on New Design Technical Offers
- Better Prices



EXECUTED PROJECTS

Mini Products and Assemblies



Big Assemblies

Earthing Switch & Operating Systems

- Basic structure
- Support insulator
- Aluminum block
- Copper parts
- Springs
- ESW operating shaft
- Gears for mechanism
- Mounting bracket

36kV Outdoor Breakers

- Basic Structure
- VCB Mechanism
- Auxiliary switch/Coil/Counter/Limit switch
- Mechanical structure
- Bushings & Epoxy parts
- Copper linkages

VCB/OEM

- Basic structure
- VCB Mechanism
- Auxiliary switch/Coil/Counter/Limit switch
- Shutter
- Spout/Pole Housing
- Lead Screw

RMU

- Basic structure
- VCB & LBS Mechanism
- Auxiliary switch/Coil/Counter/Limit switch
- Gas Tank
- Bushings & Epoxy parts
- Copper linkages

Fixed Type Breakers

- Basic structure
- VCB Mechanism
- Auxiliary switch/Coil/Counter/Limit switch
- Mechanical structure
- Bushings & Epoxy parts
- Copper linkages

Sf6 Load Break Switch

- Basic structure
- Mechanism
- Coil/Counter/Limit switch

Auto Recloser

- Basic Structure
- Mechanism
- Coil/Counter/Limit switch

Low Voltage Switchgear

- Withdrawable Module

Head Office

78/61, Latouche Road, Kanpur - 208001,
Uttar Pradesh, India

Contact Us

manish.sethi@sethiexportgroup.com | info@segamechelec.com
T: +91 7379664777 | F: +91 512-2314640